



Ultralow-Noise, High PSRR, Fast RF Low-Dropout CMOS Voltage Regulator

ZS6300 Series

INTRODUCTION

The ZS6300 series are a group of positive voltage regulators manufactured by CMOS technologies with high ripple rejection, ultra low noise, low power consumption and low dropout voltage, which can prolong battery life in portable electronics. The ZS6300 series work with low-ESR ceramic capacitors, reducing the amount of board space necessary for power applications. The ZS6300 series consume less than 0.1µA in shutdown mode and have fast turn-on time less than 50µs. The series are very suitable for the battery-powered equipments, such as RF applications and other systems requiring a quiet voltage source.

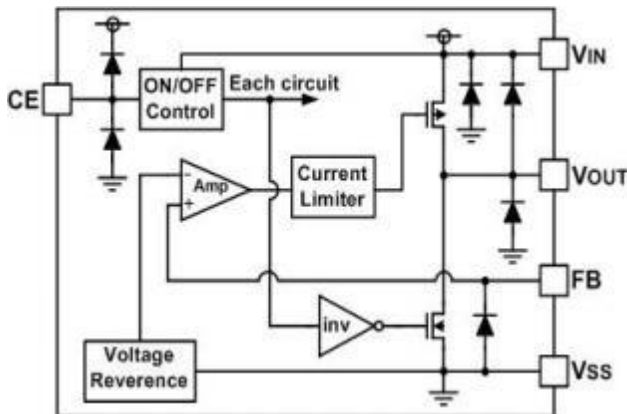
FEATURES

- 500mA RF Low-Dropout Regulator With Enable
- Ultralow-Noise: $40\mu V_{RMS}(10Hz\sim 100kHz)$
- High PSRR: $70dB@1kHz$
- Fast Start-Up Time (20µs)
- Excellent Load/Line Transient Response
- Low Dropout Voltage: $110mV@100mA$
- Stable With a $1\mu F$ Ceramic Capacitor
- Available in Adjustable Voltage Version (0.6V to 5.5V)
- Built-in Current Limiter, Short-Circuit Protection

APPLICATIONS

- RF: VCOs, Receivers, ADCs
- Cellular and Cordless Telephones
- Handheld Organizers
- Audio
- Bluetooth, Wireless LAN
- Tablet, MID

BLOCK DIAGRAM



ORDER INFORMATION

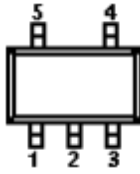
ZS6300 ①②

DESIGNATOR	SYMBOL	DESCRIPTION
①	B	High Active, pull-down resistor built in, with C_{OUT} discharge resistor
②	M/E	Package: SOT-23-5L/6L
	N	Package: WBHFBP-06L

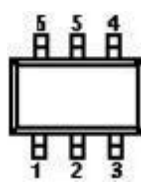
Pin configuration

PIN CONFIGURATION

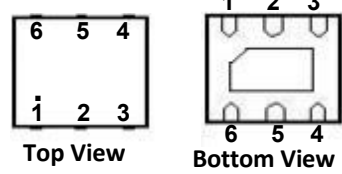
SOT-23-5L



SOT-23-6L



WBHFBP-06L



SOT-23-5L

PIN NUMBER		PIN NAME	FUNCTION
M			
1		V_{IN}	Power input Pin
2		V_{SS}	Ground
3		CE	Chip Enable Pin
4		FB	Feedback Pin: Used to Set Output Voltage
5		V_{OUT}	Output Pin

SOT-23-6L /WBHFBP-06L

PIN NUMBER		PIN NAME	FUNCTION
E	N		
1	3	V_{IN}	Power input Pin
2	2	V_{SS}	Ground
3	1	CE	Chip Enable Pin
5	6	FB	Feedback Pin: Used to Set Output Voltage
6	4	V_{OUT}	Output Pin
4	5	NC	Not Connection
-	7		Thermal Pad

TYPICAL APPLICATION

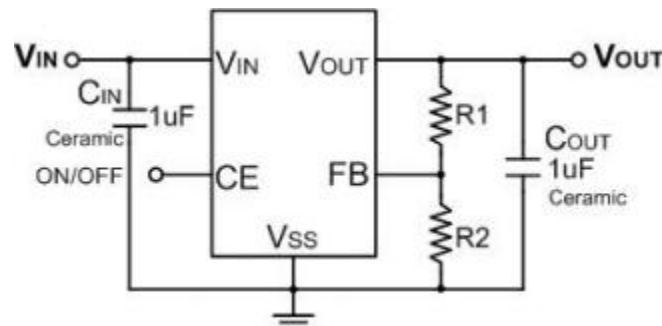


Fig.1 Typical Application Circuit

Electrical Characteristics



ABSOLUTE MAXIMUM RATINGS (Unless otherwise specified, T_A=25°C)

PARAMETER		SYMBOL	RATINGS	UNITS
Input Voltage		V _{IN}	V _{SS} -0.3~V _{SS} +8	V
Output Current		I _{OUT}	750	mA
Output Voltage		V _{OUT}	V _{SS} -0.3~V _{IN} +0.3	V
Power Dissipation	SOT-23-5 [P _d	400	mW
	SOT-23-6 [P _d	400	mW
	WBHFBP-06L	P _d	300	mW
Operating Ambient Temperature		T _A	-40~+85	°C
Operating Junction Temperature		T _j	-40~+125	°C
Storage Temperature		T _{stg}	-40~+125	°C
Soldering Temperature & Time		T _{solder}	260°C, 10s	



ELECTRICAL CHARACTERISTICS (V_{IN}=V_{OUT}+1V, C_{IN}=C_{OUT}=1μF, T_A=25°C, unless otherwise specified)

PARAMETER	SYMBOL	CONDITIONS	MIN.	TYP.	MAX.	UNITS
Input Voltage	V _{IN}	—	1.8 ⁽¹⁾		7.0	V
Output Current	I _{OUT}	V _{OUT} ≥ 1.8V	500			mA
Supply Current	I _{SS}	I _{OUT} =0mA		45	80	μA
Standby Current	I _{STBY}	V _{CE} =0V			0.1	μA
CE "High" Voltage	V _{CEH}		1.2		V _{IN}	V
CE "Low" Voltage	V _{CEL}				0.3	V
CE pin current		V _{CE} =0V	-1		1	μA
FB Voltage	V _{FB}	I _{OUT} =1mA	0.588	0.600	0.612	V
FB pin current		V _{FB} =1.8V			1	μA
Output voltage range			0.6		5.5 - V _{DO}	V
Line Regulation	$\frac{\Delta V_{OUT}}{V_{OUT} \Delta V_{IN}}$	I _{OUT} = 10mA V _{OUT} + 1V ≤ V _{IN} ≤ 7V		0.01	0.2	%/V
Load Regulation	ΔV _{OUT}	V _{IN} = V _{OUT} + 1V, 1mA ≤ I _{OUT} ≤ 100mA		1		mV
Dropout Voltage ⁽²⁾	V _{dif}	I _{OUT} = 100mA V _{OUT} ≥ 3.0V		110		mV
Output Voltage Temperature Characteristics	$\frac{\Delta V_{OUT}}{\Delta T} \bigg _{V_{OUT}}$	I _{OUT} = 10mA -40 ≤ T ≤ +85		50		ppm
Current Limit	I _{LIM}		600	750		mA
Short Current	I _{SHORT}	V _{OUT} = V _{SS}		20		mA
Power Supply Ripple Rejection	V _{OUT} = 1.2V	PSRR	f=100Hz, I _{OUT} =50mA	80		dB
			f=1kHz, I _{OUT} =50mA	70		
			f=10kHz, I _{OUT} =50mA	50		
Output noise voltage		BW=10Hz to 100kHz, I _{OUT} =10mA		40		μV _{RMS}
Time, start-up		I _{OUT} =0mA, C _{OUT} =1μF		20		μS

Electrical Characteristics

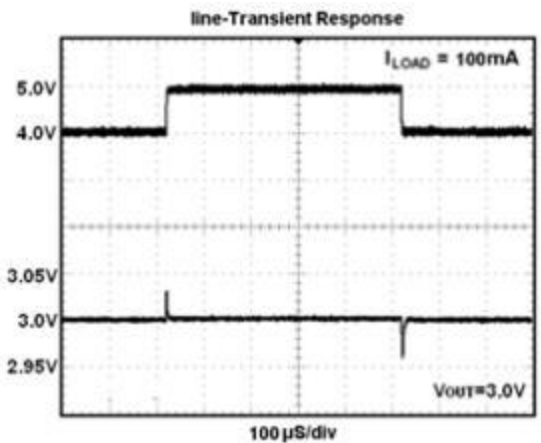
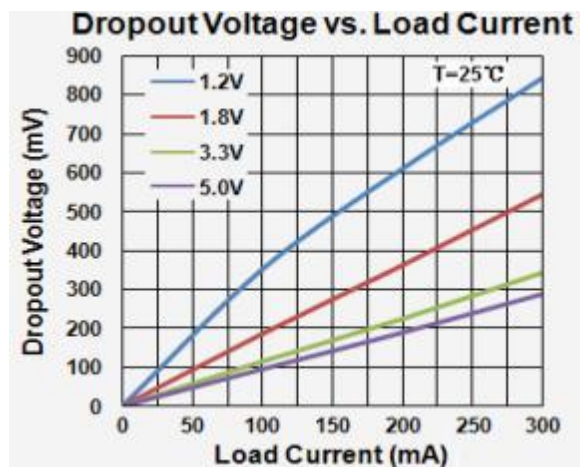
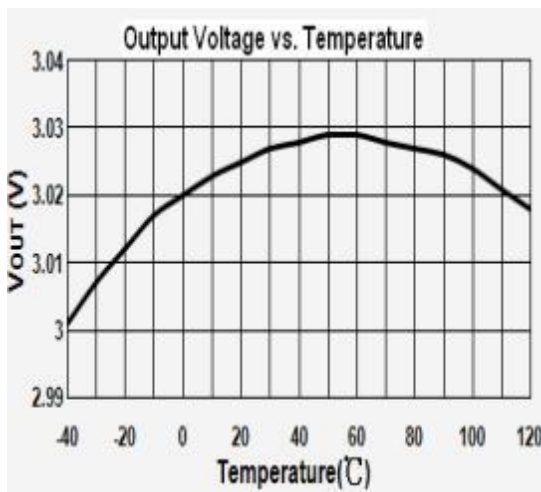
NOTE:

- (1) Minimum V_{IN} is 1.8V or $V_{OUT} + V_{DO}$, whichever is greater.
- (2) V_{dif} : The difference of output voltage and input voltage when input voltage is decreased gradually till output voltage equals to 98% of V_{OUT} (E).

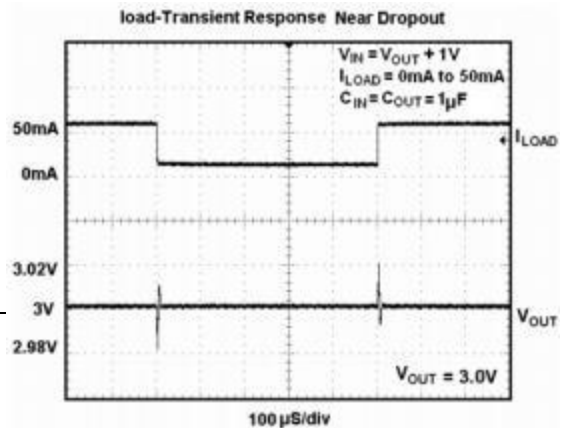
DROPOUT VOLTAGE CHART

Setting Output Voltage	Dropout Voltage (mV) Typ.			
$V_{OUT}(V)$	$I_{OUT}=100mA$	$I_{OUT}=200mA$	$I_{OUT}=300mA$	$I_{OUT}=500mA$
1.2	380mV	640mV	880mV	
1.5	250mV	480mV	680mV	
1.8	190mV	380mV	570mV	950mV
2.1	155mV	310mV	470mV	820mV
2.5	130mV	260mV	400mV	700mV
2.8	120mV	240mV	360mV	640mV
3.0	110mV	230mV	350mV	610mV
3.3	105mV	210mV	320mV	570mV
3.6	100mV	200mV	310mV	540mV
4.0	95mV	185mV	290mV	500Mv
4.5	90mV	180mV	280mV	470mV
5.0	85mV	170mV	260mV	440mV

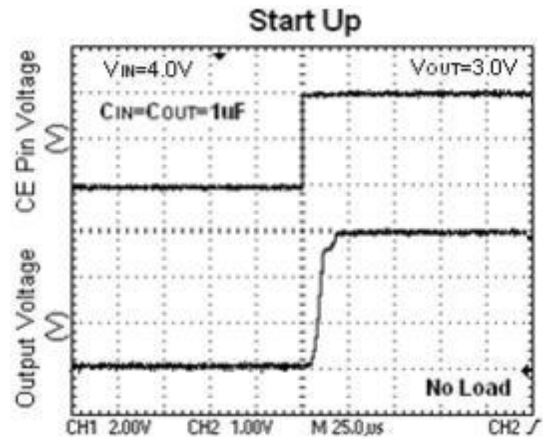
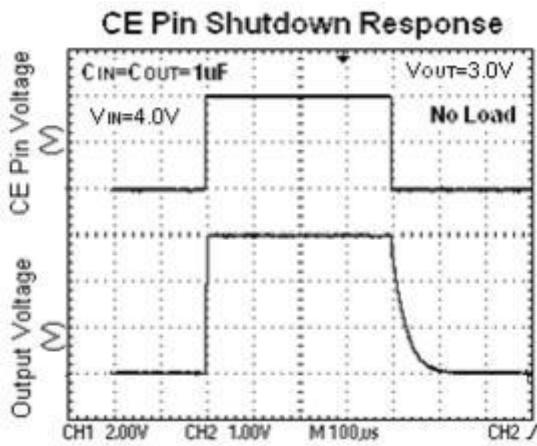
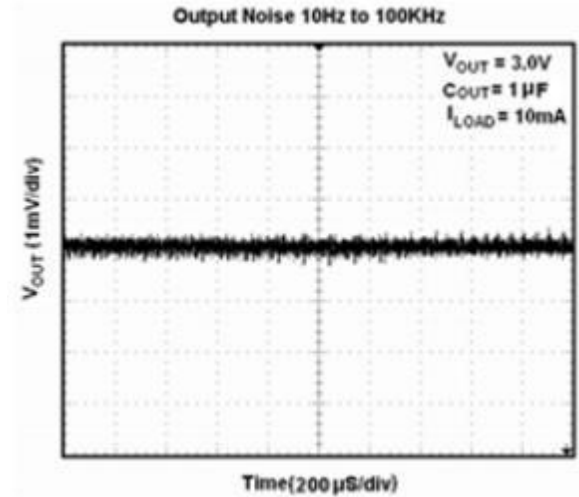
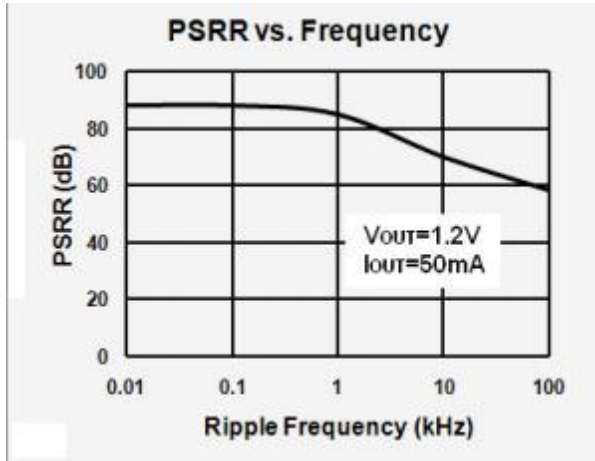
TYPICAL PERFORMANCE CHARACTERISTICS



(9)



Typical Characteristics (Continued)



APPLICATION INFORMATION

Setting The Output Voltage

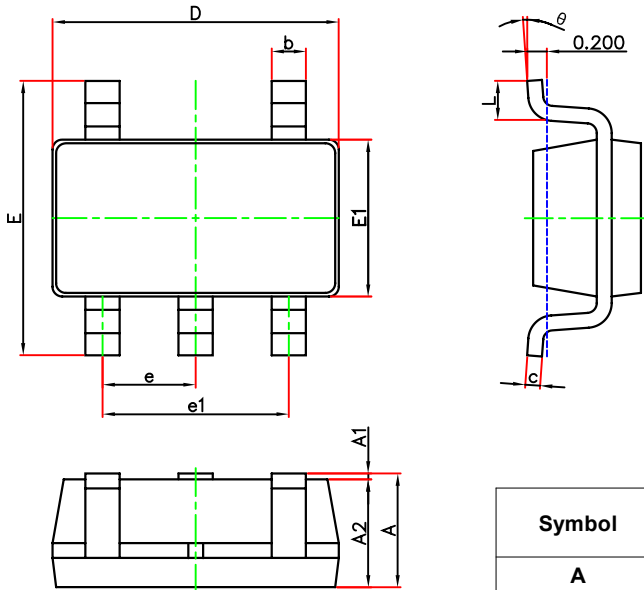
Figure 1 shows the typical application circuit with ZS6300 . The external resistor sets the output voltage according to the following equation:

$$V_{OUT} = 0.6V \left(1 + \frac{R1}{R2} \right)$$

Table 1. Resistor select for output voltage setting

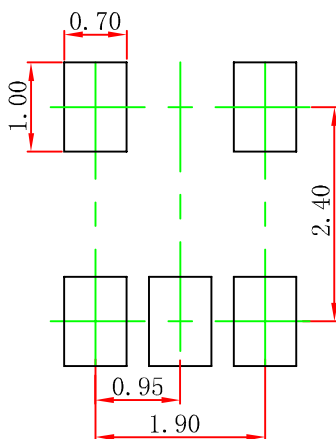
V_{OUT}	R1	R2
1.2V	30.1K	30.1K
1.5V	45.3K	30.1K
1.8V	60.4K	30.1K
2.5V	95.3K	30.1k
2.8V	110K	30.1k
3.0V	120K	30.1K
3.3V	137K	30.1K
5.0V	221K	30.1k

SOT-23-5L Package Outline Dimensions



Symbol	Dimensions In Millimeters		Dimensions In Inches	
	Min.	Max.	Min.	Max.
A	1.050	1.250	0.041	0.049
A1	0.000	0.100	0.000	0.004
A2	1.050	1.150	0.041	0.045
b	0.300	0.500	0.012	0.020
c	0.100	0.200	0.004	0.008
D	2.820	3.020	0.111	0.119
E	2.650	2.950	0.104	0.116
E1	1.500	1.700	0.059	0.067
e	0.950(BSC)		0.037(BSC)	
e1	1.800	2.000	0.071	0.079
L	0.300	0.600	0.012	0.024
θ	0°	8°	0°	8°

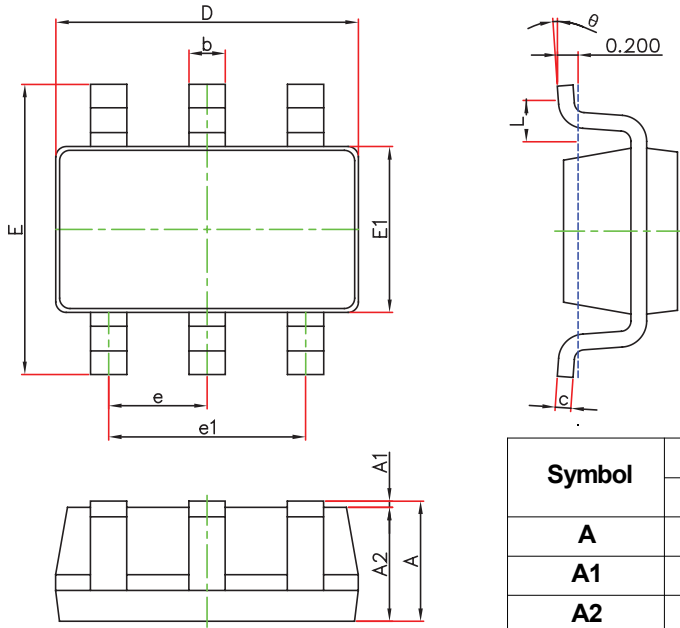
SOT-23-5L Suggested Pad Layout



Note:

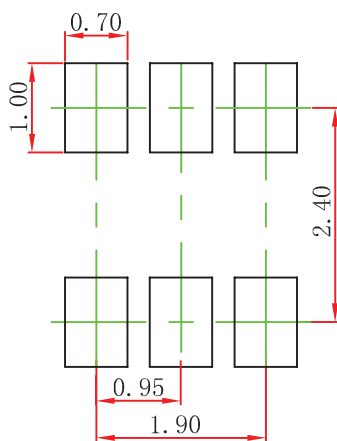
1. Controlling dimension; in millimeters.
2. General tolerance ± 0.05 mm.
3. The pad layout is for reference purposes only.

SOT-23-6L Package Outline Dimensions



Symbol	Dimensions In Millimeters		Dimensions In Inches	
	Min	Max	Min	Max
A	1.050	1.250	0.041	0.049
A1	0.000	0.100	0.000	0.004
A2	1.050	1.150	0.041	0.045
b	0.300	0.500	0.012	0.020
c	0.100	0.200	0.004	0.008
D	2.820	3.020	0.111	0.119
E	2.650	2.950	0.104	0.116
E1	1.500	1.700	0.059	0.067
e	0.950(BSC)		0.037(BSC)	
e1	1.800	2.000	0.071	0.079
L	0.300	0.600	0.012	0.024
θ	0°	8°	0°	8°

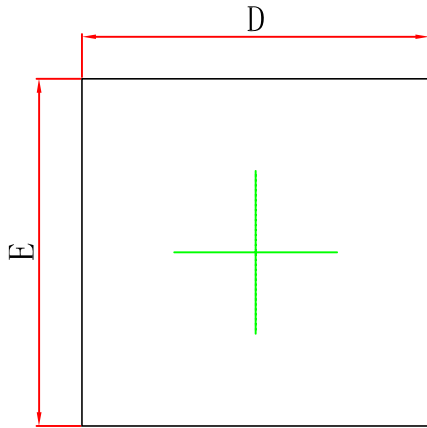
SOT-23-6L Suggested pad Layout



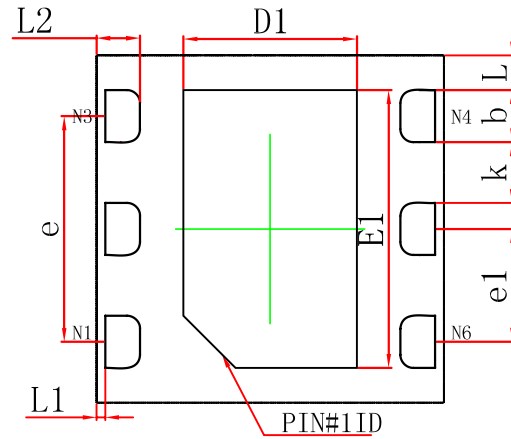
Note:

1. Controlling dimension; in millimeters.
2. General tolerance: ± 0.05 mm.
3. The pad layout is for reference purposes only.

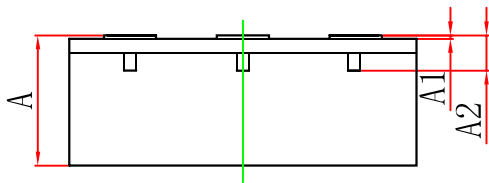
WBHFBP-06L Package Outline Dimensions



Top View



Bottom View



Side View

Symbol	Dimensions In Millimeters		Dimension In Inches	
	Min.	Max.	Min.	Max.
A	0.700	0.800	0.028	0.031
A1	0.000	0.050	0.000	0.002
A2	0.203REF		0.008REF	
D	1.950	2.050	0.077	0.081
E	1.950	2.050	0.077	0.081
D1	0.950	1.050	0.037	0.041
E1	1.550	1.650	0.061	0.065
b	0.250	0.350	0.010	0.014
e	1.300REF		0.051REF	
e1	0.650BSC		0.026BSC	
k	0.350REF		0.014REF	
L	0.200REF		0.008REF	
L1	0.050REF		0.002REF	
L2	0.200	0.300	0.008	0.012

DISCLAIMER

IMPORTANT NOTICE, PLEASE READ CAREFULLY

The information in this data sheet is intended to describe the operation and characteristics of our products. ZS has the right to make any modification, enhancement, improvement, correction or other changes to any content in this data sheet, including but not limited to specification parameters, circuit design and application information, without prior notice.

Any person who purchases or uses ZS products for design shall: 1. Select products suitable for circuit application and design; 2. Design, verify and test the rationality of circuit design; 3. Procedures to ensure that the design complies with relevant laws and regulations and the requirements of such laws and regulations. ZS makes no warranty or representation as to the accuracy or completeness of the information contained in this data sheet and assumes no responsibility for the application or use of any of the products described in this data sheet.

Without the written consent of ZS, this product shall not be used in occasions requiring high quality or high reliability, including but not limited to the following occasions: medical equipment, automotive electronics, military facilities and aerospace. ZS shall not be responsible for casualties or property losses caused by abnormal use or application of this product.